



Typical 2 Stall Building



Men's and Women's Stalls

“When a Portable Toilet is Not an Option”



Re-Deployable



Steel Floor with Tine Ports

Partial List of Features:

- ADA Compliant
- Maximum Privacy
- No Waste Reservoir in Stall
- No Excavation Required for Ground Level
- Garden Hose Water Source
- Design Flexibility
- Roomy Stalls
- 36" x 80" Doors on All Stalls
- Can be Plumbed to Holding Tank, Septic Tank or Sewer
- Ceramic Fixtures (No RV or Marine Toilet Fixtures)
- See List of Standard Safety Features
- Can Be Ground Level or Trailer Mounted
- Fresh Water Flush and Hand Wash
- Soap & Towel Dispensers

Patents Issued and Pending

Porta John Industries, Inc.
 Phone: 1-800-521-6310 Fax: 1-586-731-0670
 E-mail: info@toilets.com Web Site: www.toilets.com



Men's – Women's – ADA Three Stall building



ADA Stall

Standard Equipment: Ceramic Fixtures -
Mirrors - Towel & Soap Dispensers –
Toilet Roll Holders – Waste Containers –
Fresh Water Hookup (Garden Hose) –
4" Waste Exit with 3" Reducer – Steel
Frame with Steel Encased Tine Ports for
Maximum Safety & Mobility – 36" Doors

Optional Equipment:
Air Conditioning/Heater Combination –
Water Heater – Baby Changer –
ADA Stall – Holding Tanks

Porta John Industries, Inc.

Phone: 1-800-521-6310

Fax: 1-586-731-0670

E-mail: info@toilets.com

Web Site: www.toilets.com

International Phone: 1-586-739-4611

WALLS



- ✓ 1" Thick Composite Wall Material
- ✓ Outer and Inner Wall Covering Made from Recycled ABS
- ✓ Honeycomb is 30% Recycled Polyethylene Material
- ✓ All Doors are 36"
- ✓ **ADA Compliant Stall Available**

STANDARD SAFETY FEATURES:



Fire Extinguisher



Smoke Detector



Door Locks/Deadbolt Locks



Safety Lights

5' x 7' Stall

Non-Skid Flooring



Emergency Mobile Sanitation System As Required

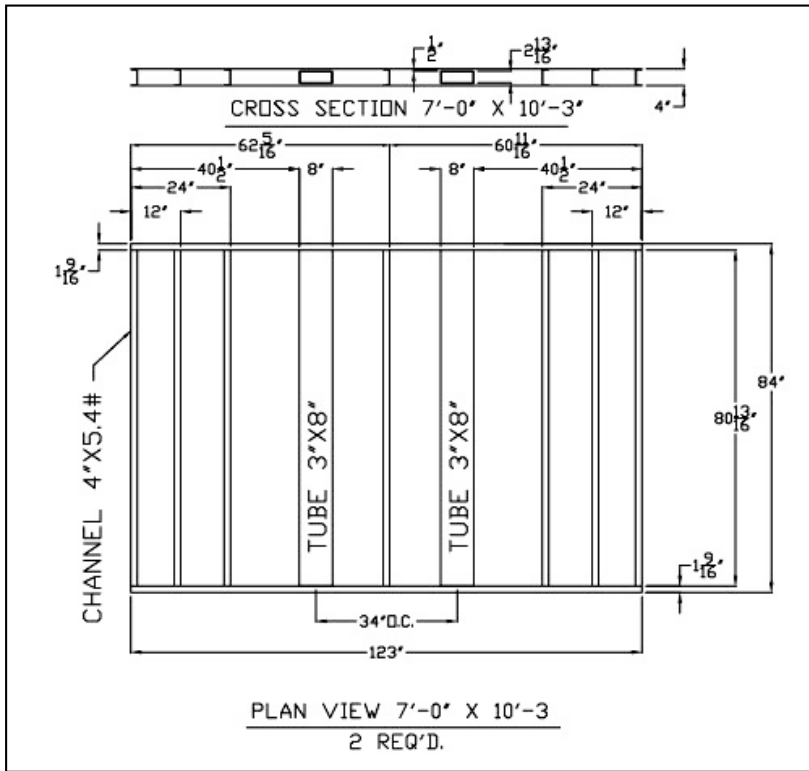
Porta John Industries, Inc.

Phone: 1-800-521-6310

Fax: 1-586-731-0670

E-mail: info@toilets.com

Web Site: www.toilets.com



Two Stall Building Steel Frame Drawing

Two Stall Building Steel Frame with Fully Encased Steel Tine Ports for Maximum Mobility for Relocation or Natural Disasters



Two Stall Building with Non-Skid Linoleum and U Channels Bolted to Steel Frame

Epoxy is Placed in U Channels for Waterproofing and Adherence to Walls Before 1" Honeycomb Walls are Set in Place