

How It Works
Patent #6,721,967

All In One

Specifications AIO 208s:

- Electrical Service 50 Amps
- Overhead Light
- Up To Two Outlets
- Divider Wall/Door
- One Add-A-Bathroom with Enclosure
- Linoleum
- Holding Tank

Price Quote: Requires Customer Specifications

Patent #6,721,967

Options

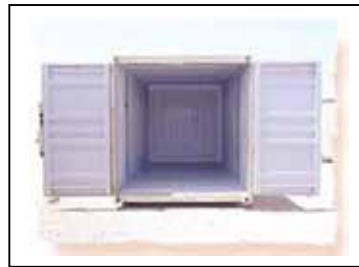
Window Without Security Bars
Steel Security Door

Security Bars on Window
In Line Hot Water Heater

Shower Option



Many Floor Plans



Rear Door Option



Add A Bath Option

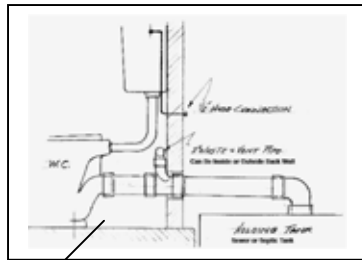
Toilets.com, Inc.
 Phone: 1-800-521-6310 Fax: 1-800-437-9220
 E-mail: info@toilets.com Web Site www.toilets.com



All In One Patent #6,721,967



Optional Double Doors



How It Works
Patent #6,721,967

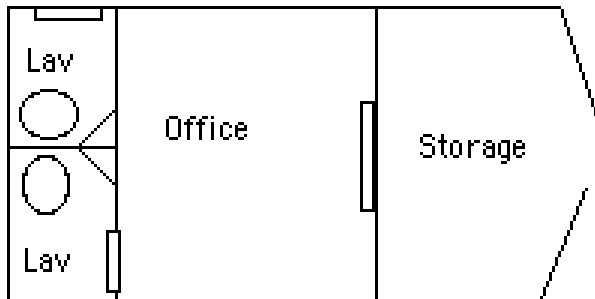
Toilets.com, Inc.
Phone: 1-800-521-6310 Fax: 1-800-437-9220
E-mail: info@toilets.com Web Site www.toilets.com

All In One Site Management Solution



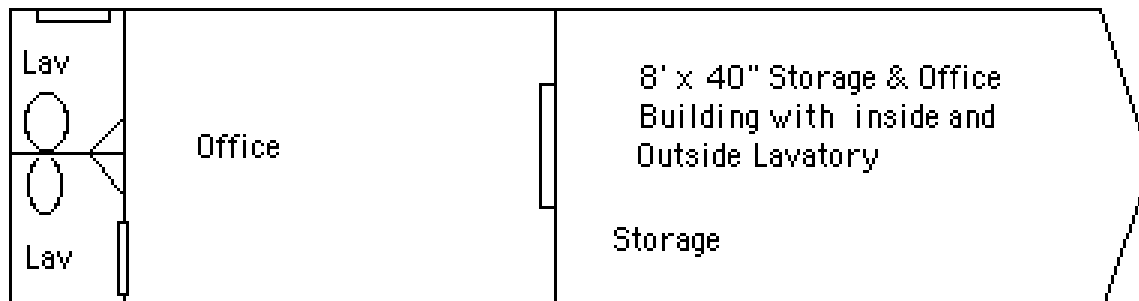
8' x 20 Storage
Inside and out side Lavatory

Patent Pending



8' x 20 Storage & Office
Inside and out side Lavatory

All Units are Ground Level Fresh Water Flush Systems



8' x 40" Storage & Office
Building with inside and
Outside Lavatory

Storage

Lavatories can be plumbed to our holding tank, septic system or sewer. Water source can be a garden hose or water tank.